
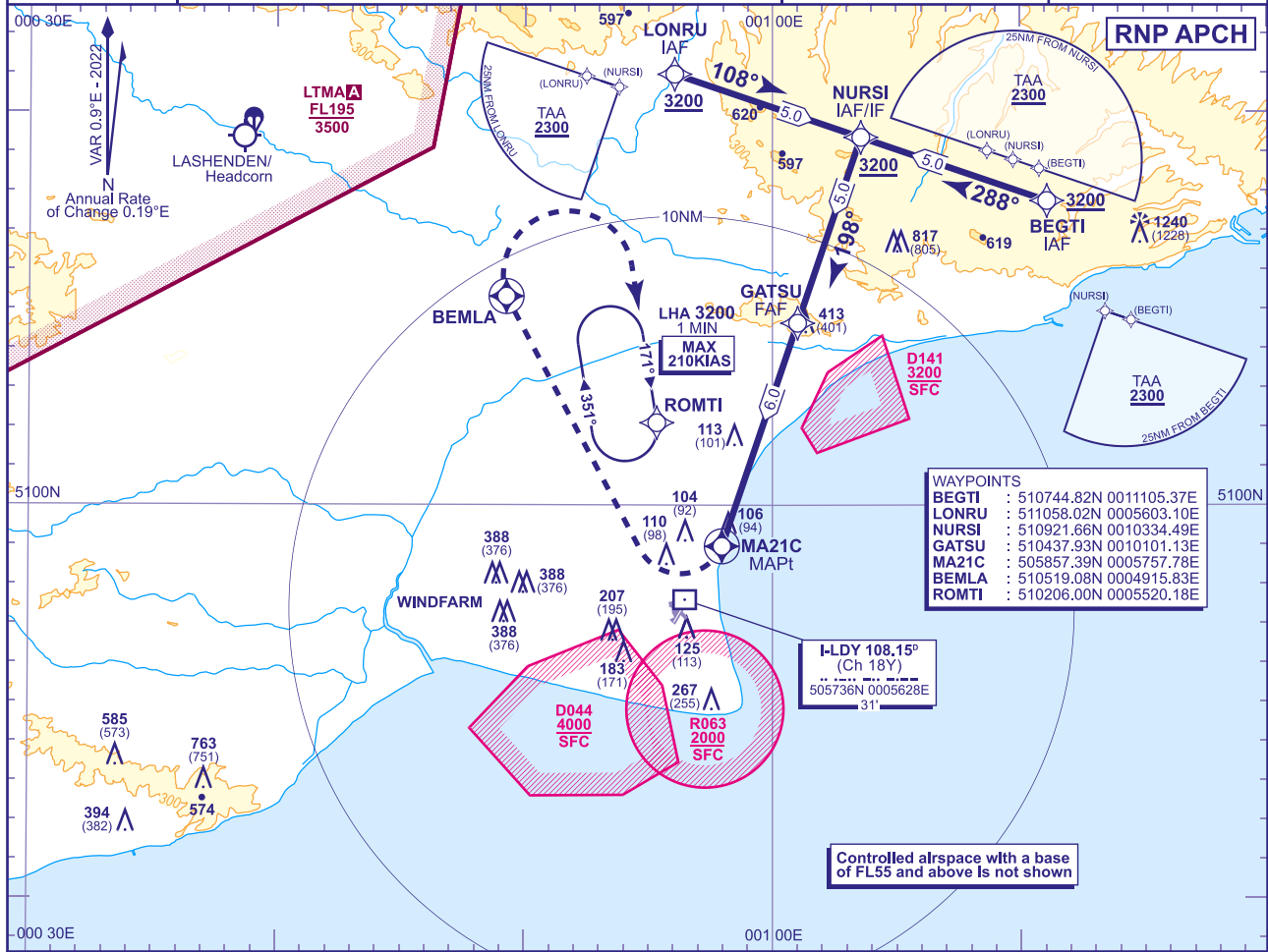


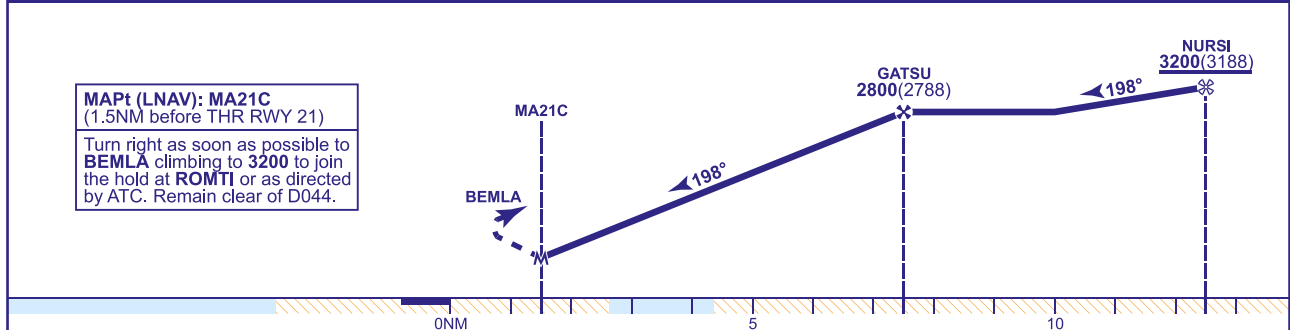
INSTRUMENT APPROACH CHART - ICAO

LYDD
RNP Z
RWY 21
(ACFT CAT C)

 <div>MSA 25NM ARP</div>	APP 120.705	LYDD APPROACH	AD ELEVATION 13	<div>RNP Z RWY 21 (ACFT CAT C)</div>
	TWR 119.380	LYDD TOWER	THR ELEVATION 12	
	ATIS 129.230	LYDD INFORMATION	OBSTACLE ELEVATION 1240 AMSL (1228) (ABOVE THR)	
			BEARINGS ARE MAGNETIC	
				TRANSITION ALTITUDE 6000



RECOMMENDED PROFILE Gradient 6.01%, 365FT/NM						
NM to MA21C	6	5	4	3	2	1
ALT(HGT)	2800(2788)	2430(2418)	2070(2058)	1700(1688)	1340(1328)	970(958)



Aircraft Category		C	Rate of descent	G/S KT	160	140	120	100	80
OCA (OCH)	LNAV	610(598)		FT/MIN	970	850	730	610	490
VM(C)OCA (OCH AAL)	Total Area	N/A							
	West of RWY 03/21	790(777)							

NOTE 1 FAT offset 14° from RWY 21 C/L.
2 DME I-LDY will read zero at THR RWY 21.
3 MAX speed for procedure 180KIAS.
4 MAX speed on MAP 150KIAS until MAP initial turn completed.
5 A/C to remain clear of EGD141 on approach and EGD044 on MAP.